

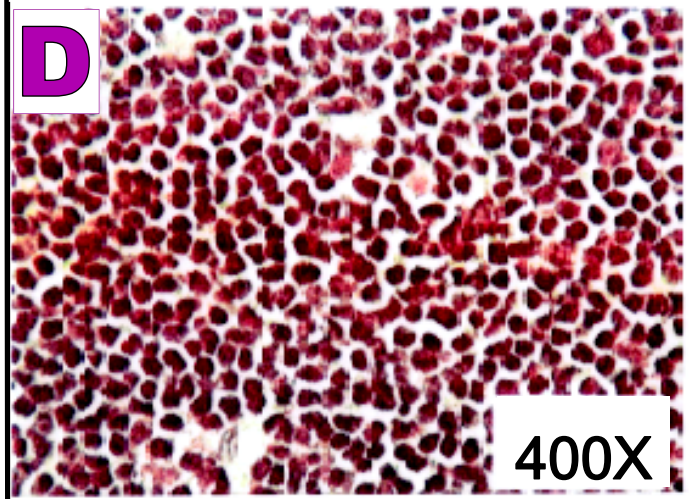
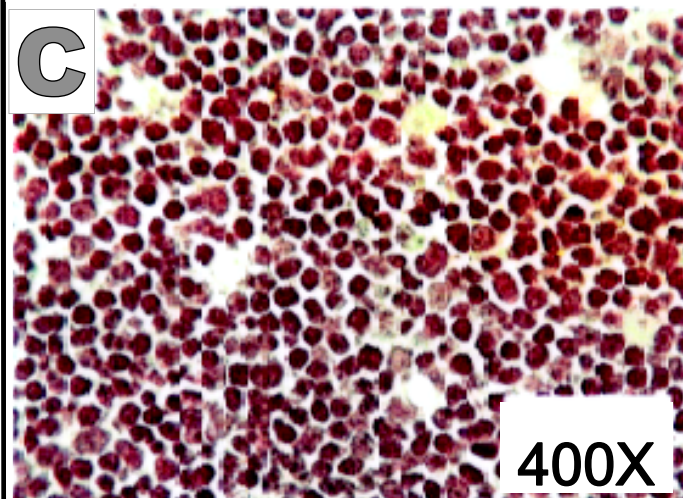
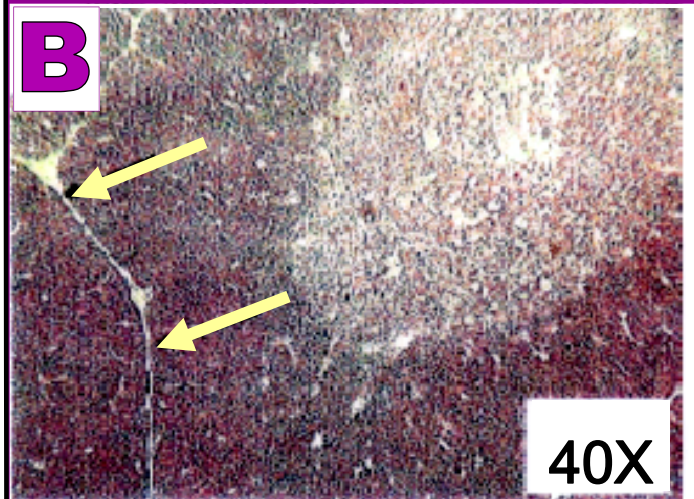
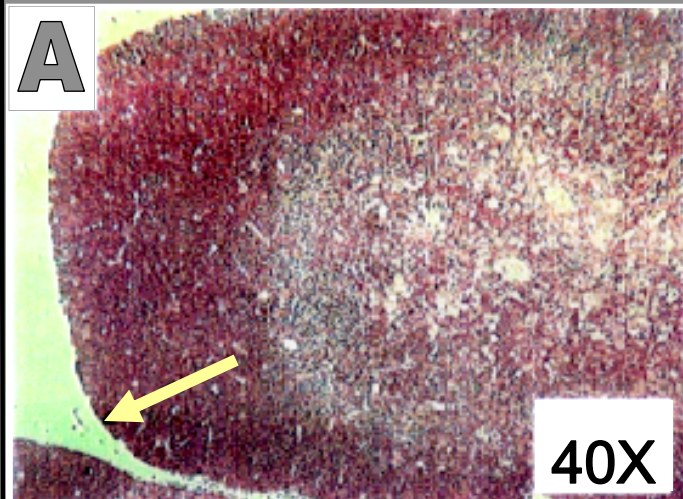
# Thymus Sections

Placebo Control Feline vs. Ig2000 Treated Feline

Overall Improvements to Thymic Structure Post Ig2000 Treatments

Placebo Control Feline (Panels A & C)

Ig2000 Treated Feline (Panels B & D)



**Slides Compare the Thymus of a Placebo Treated Control Feline to the Thymus of an Ig2000 Therapeutic Laser Treated Feline.**

**40X magnification** shows an overall increase in the areas of individual thymic lobules in the treated vs the placebo treated feline thymus (Panels **A & B**). Notice how the edges of the lobules in Panel **A** are more rounded and do not crowd the adjacent lobule, while the edges of the lobules in Panel **B** are more angular and more closely about the adjacent lobules.

**400X magnification** shows a similar cell density in both Panels **C & D** but with an overall increase in the volume of tissue in Panel **D**. The results of the necropsies further demonstrated that, while all the thymic structures in all of the healthy felines examined were normal, an overall increase in the volume of tissue along with a slight increase in the number of Thymocytes was observed in *both* of the Ig2000 treated felines (n=2) when compared to the placebo treated control feline (n=1) above, and/or the six historical age-matched controls (n=6 not shown).